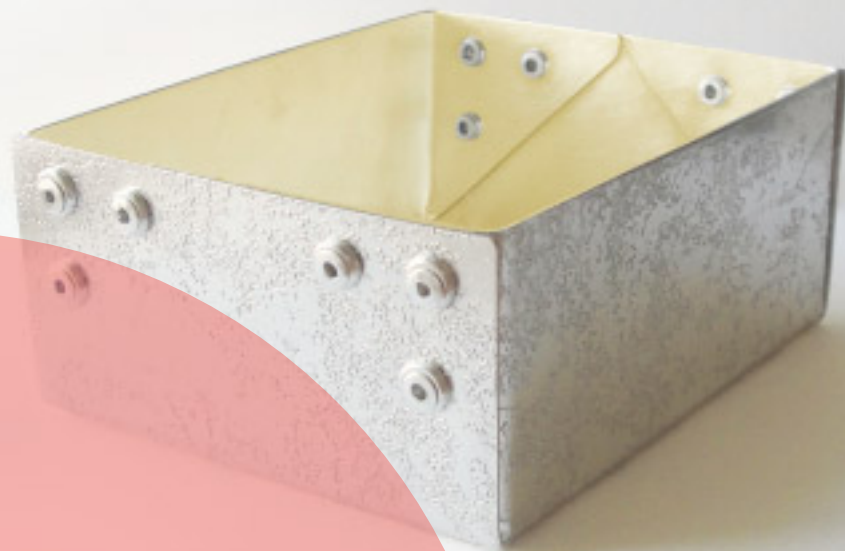


'Eroded Box' by Kirsty Eaglesfield, Aesthetics of Manufacture
Photo by Richard Crawford



 Galvanize Sheffield  @galvanizfest

For further information about Galvanize Sheffield contact:
Sara Unwin, Galvanize Festival Manager
E: saraunwin@yahoo.co.uk

Every effort has been made to ensure that the programme details are correct.
However, Galvanize Sheffield and Partners of the festival cannot accept responsibility
for any inaccuracies, omissions and consequences arising there from.

www.galvanizefestival.com

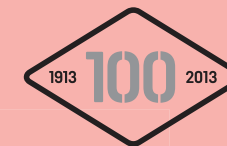


Festival of Contemporary Metal

3-31 May
2013

Galvanize Sheffield

www.galvanizefestival.com



YEARS OF
STAINLESS STEEL
Sheffield



Supported using public funding by
ARTS COUNCIL ENGLAND



"I want to take materials such as concrete and steel which are often seen as being brutal and cold and bring a level of sensitivity to them".

Drew Markou, designer-maker objects and jewellery

Front cover image:
Extrovert, 2012 - Drew Markou
at Made North Gallery

Welcome to Galvanize Sheffield



Crown, Karina Gill,
Aesthetics of Manufacture

2013

1

Sheffield, synonymous with steel production and the metal trades, famed for its production of stainless steel, fine cutlery and heavy engineering that shaped the world, is a city of endeavour, creativity and craftsmanship. Metal skills thrive here today through a community of designer makers who create beautiful designs in metal and through the manufacturing of metal products in the city.

Galvanize is a celebration of the past, present and future in all things metal. It is an affirmation that investing in skills and innovation will ensure that beautiful objects, practical tools and powerful products continue to be made in Sheffield and appreciated around the world.

We are delighted to introduce new partners and events this year including a pop up jewellery market, an artist in residence, a Metal Party and more ever-popular hands-on opportunities to work metal yourself with skilled makers!

The festival this year will pave the way for new touring activity in 2014. Visit our website for news at:

www.galvanizefestival.com

Venue Access: Please contact each venue directly for access information and opening hours. Websites and contact details are shown for all events and exhibitions.



YEARS OF
STAINLESS STEEL
Sheffield

100 years of Stainless Steel

2013 will mark 100 years since Stainless steel was discovered by the entrepreneur Harry Brearley, a breakthrough that would revolutionize the modern world and put Sheffield on the global map. The city is hosting a year long programme to commemorate the discovery and reaffirm the legacy of innovation which still exists in the city today; find out more at: www.welcometosheffield.co.uk/visit/stainless

2



Images supplied by:



Images: (left to right) Tower 42, City of London (formerly known as the National Westminster Tower), Mead's Reach Bridge, Bristol (image courtesy of m-Tec) and Marina Bay Bridge, Singapore

Metal in Residence

Millennium Gallery
& Persistence Works

Various dates | Free

We are delighted to welcome David Appleyard as our artist in residence for 2013. David is an artist and designer working primarily on creative projects for the public realm. With his designs he aims to make a contribution to the quality of our environment, enhance our day to day experience of life and encourage debate.

David will be working at various sites and venues throughout the festival and will create new seating for the Metalwork Collection at the Millennium Gallery.

The new work will be made using stainless steel from Ancon Building Products Ltd and as part of the residency, David will spend time with their team to find creative ways of working and fabricating stainless steel.

David will be drawing inspiration from the existing work in the gallery and we want you to come and meet him, visit the Metalwork Collection, join in debate and talk about the design of the new piece:

Wednesday 22 May, 14.00 - 16.00
& **Wednesday 29 May, 11.00 - 13.00**

Drop in to meet David and the team at Museums Sheffield with the chance to handle objects from the Metalwork collection.

Friday 24 May, 14.00 - 16.00

Visit David in his studio at Persistence Works to see existing artwork and learn about previous projects.

T: 0114 2782600 (MS)
E: info@museums-sheffield.org.uk / info@davidappleyard.co.uk
W: www.museums-sheffield.org.uk / www.davidappleyard.co.uk



Factory Girl (Salford Quays), David Appleyard

3

Addresses:
Millennium Gallery: Arundel Gate, Sheffield, S1 2PP
Persistence Works: 21 Brown Street, Sheffield, S1 2BS

Clutch Bag 2013, Hand chased Sterling silver, Katey Felton
(see Katey's work in Little Gems)

Exhibitions, Commissions & Installations

4



STAIN-LESS

Sheffield Institute of Arts Gallery

3 - 26 May | Free

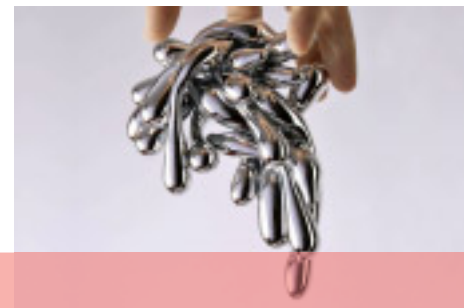
A juried exhibition of new work from members of the Association for Contemporary Jewellery. The theme, **STAIN-LESS**, seeks to interpret and explore notions of narrative, addressing cultural and social issues as well as aspects of process. The exhibition includes jewellery and body adornment in a variety of materials, precious and non-precious, using old and new technologies.

Associated talk: see page 22

T: 0114 225 6956
E: t.machin@shu.ac.uk
W: www.shu.ac.uk/siagallery

Address: Cantor Building,
Sheffield Hallam University,
153 Arundel Street,
Sheffield, S1 2NU

Image: The Long Curve
neckpiece, Jenny Deans
Photo: John McKenzie



Aesthetics of Manufacture

Butcher Works Gallery

9 - 31 May | Free

An exhibition of the industrial manufactured product along with the individually made decorative art object. Looking at the relationship between Art and Industrial production, **Aesthetics of Manufacture** includes stunning new work and brings together examples of advanced engineering techniques with original one-off hand crafted objects often included in a single designed piece, and looks at what connections can be made between these apparently diverse working groups of metal-smiths.

T: 0114 252 5972
E: gallery@fmc.rmt.org
W: www.academyofmakers.co.uk

Address: 72 Arundel Street, Sheffield, S1 2NS

Image: excess flow (from the excessories-series), Christoph Zellweger



Little Gems Commissions

5

Foyer, Museums Sheffield:
Millennium Gallery

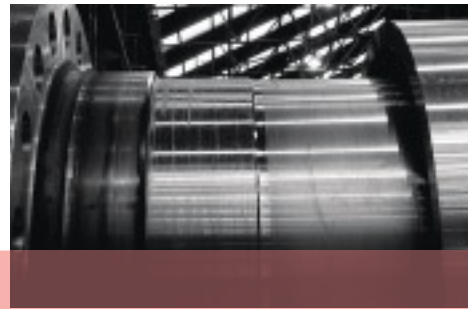
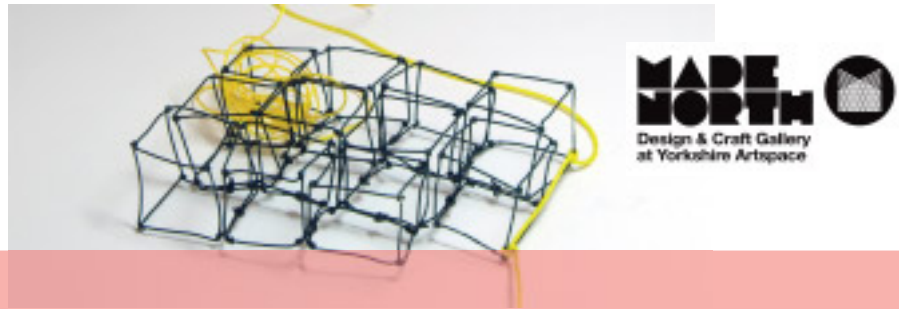
From 29 April | Free

Early career silversmiths Sarah Pasley and Colette Bishop were selected for the Sheffield Assay Office's 'Little Gems' commission and asked to respond to the theme of 100 Years of Stainless Steel and at the same time to celebrate 240 years of the Assay Office. Capella Manufacturing in Buxton, kindly donated 2kg of fine silver to be incorporated into the commissions. This annual commission has developed over 10 year collaboration between Sheffield Assay Office, Museums Sheffield and Yorkshire Artspace to support the Starter Studio Programme for Designer Silversmiths based at Persistence Works.

T: 0114 2782600
E: info@museums-sheffield.org.uk
W: www.museums-sheffield.org.uk

Address: Arundel Gate, Sheffield, S1 2PP

Image: Fractured vessel in the making,
Colette Bishop



6 LITTLE GEMS - TEN YEARS ON

Metalwork Collection, Museums Sheffield:
Millennium Gallery

From 29 April | Free

Little Gems - Ten Years On represents the work of 19 early-career silversmiths selected for the Starter Studio Programme at Yorkshire Artspace. Each silversmith was given the opportunity to create new work, commissioned by the Sheffield Assay Office. These works are now in Museums Sheffield's public Metalwork collection and the private collection of the Sheffield Assay Office. This is the first time all the pieces have been on public display together.

T: 0114 278 2600
E: info@museums-sheffield.org.uk
W: www.museums-sheffield.org.uk

Address: Arundel Gate,
Sheffield, S1 2PP

Image: Aperture Bowl,
Andrew Sutherland

FUTURE in the MAKING

MADE NORTH Gallery at Yorkshire Artspace

2 May - 1 June | Free

MADE NORTH and Yorkshire Artspace present 'FUTURE in the MAKING', an exhibition of two halves. In one half we present new work by five early career designer-makers selected for the Craft Council's HotHouse North Cohort. The other half of the exhibition, co-curated with Wentworth Pewter, features new work by emerging designers who use new technology to create designs in pewter. Demonstrations of design processes and the new technologies used are programmed into the exhibition; software company Delcam Plc will be demonstrating the latest CAD/CAM technology with live machining events over 2 days. MADE NORTH will be working with Delcam and Wentworth Pewter to prototype new work by northern designers.

**Delcam Demonstrations showing the use of advanced technology in the making of jewellery:
Wednesday 15 & Thursday 16 May, 12.00-18.00**

T: 0114 213 0111
E: info@madenorth.co.uk
W: www.madenorthgallery.co.uk /
www.artspace.org.uk

Address: MADE NORTH Design & Craft Gallery
at Yorkshire Artspace, Persistence Works,
21 Brown Street, Sheffield S1 2BS

Image: Blocks 1, 2013, Kirsty Pearson



Steel Soul

Winter Garden

27 May - 9 June | Free

Steel has been produced on the Brightside Lane site, home of Sheffield Forgemasters, since 1863 when Vickers founded the River Don Works. Today the Lower Don Valley is a changed landscape, but the historic site of world-renowned Sheffield Forgemasters still stands proud on the banks of the river.

Photographer Andrew G. Smith was invited on site by Professor Graham Honeyman, the Chief Executive of Forgemasters, to explore and photograph the 4 steel manufacturing processes.

E: bymyi@bymyi.com
W: www.bymyi.com

Address: The Winter Garden,
Surrey Street, S1 2LH

Image: Steel Soul,
Andrew G. Smith

Drawing on Steel

Bank Street Arts

7 - 31 May | Free

Drawing on the idea of the 'processing' of steel to change its nature, this exhibition will focus on showcasing the 'process' of jewellery-making rather than '(finished) product'.

From sketches and drawings to photographs, written ideas, notes, even models, the only criterion for this open submission show is the envisaged use of stainless steel as one of the components.

T: 0114 346 3034
E: info@bankstreetarts.com
W: www.bankstreetarts.com

Address: 32-40 Bank Street, Sheffield, S1 2DS

Image: Element No.1, Martin Drury

One Woman's Waste is Another's Treasure

Bank Street Arts

3 - 31 May | Free

This exhibition aims to question our perceptions of the precious by mixing discarded everyday objects containing base metals with precious metals to create jewellery. With metals being a finite resource, should we begin to reconsider what we mean by the notion of 'precious' metal?

Abigail Ivall is a jewellery designer-maker based at Bank Street Arts with BA (Hons) Metalwork and Jewellery and MA in Design from Sheffield Hallam University

T: 0114 346 3034
E: info@bankstreetarts.com
W: www.bankstreetarts.com

Address: 32-40 Bank Street,
Sheffield, S1 2DS

Image: Forgotten but not lost, Abigail Ivall



8 Exhaust Chairs

Bank Street Arts

3 - 31 May | Free

Jessica Thorne's chairs made from exhausts are intent on blurring the boundaries between art, design and engineering. Her work often involves playing with/questioning the 'value' of things that fall outside of the categories acknowledged by our current paradigm.

T: 0114 346 3034
E: info@bankstreetarts.com
W: www.bankstreetarts.com

Address:
32-40 Bank Street,
Sheffield, S1 2DS

Image: Exhaust Chair,
Jessica Thorne



Immaculate Exhibition

Ruskin Arts & Crafts

8 - 25 May | Free

An exhibition showcasing the new collection of jewellery in Argentium silver, by Annette Petch, inspired by the environment and architecture around her studio. Argentium is an alloy of silver and germanium, with the wonderful properties of being firestain free and tarnish free. Ruskin Arts and Crafts stocks a range of beautiful handmade contemporary craftwork to buy.

Annette is based at Manor Oaks Studios, set in a beautiful environment with gardens, a farm shop and café on site. She will be opening her studio and demonstrating some traditional hand making processes using Argentium silver, and displaying and selling her beautiful jewellery on 4, 5 and 11 May 11.00-17.00.

T: 0114 2525985 (shop) 07952 235985 (AP)
E: ruskinartsandcrafts@gmail.com / annette@annettepetchjewellery.co.uk
W: www.annettepetchjewellery.co.uk

Addresses:
Ruskin Arts & Crafts, Butcher Works, 72 Arundel Street, Sheffield, S1 2NS
Manor Oaks Studios: Studio 1, Manor Oaks Studios,
389 Manor Lane, Sheffield, S2 1UL

Image: Fold form leaf earrings, Annette Petch

Photo: Jerry Lampson

"Steel as a material has always been a part of my work, its use derives from its strength and durability. The work I create explores this strength by using frame structures inspired by the repetition found in the urban environment I live in".
Kirsty Pearson, jewellery designer





10 Designed to Shine: 100 Years of Stainless Steel

Museums Sheffield: Millennium Gallery

Until 13 October | Free

In 1913, 'rustless' steel was discovered in the UK by Sheffield's Harry Brearley. This brand new exhibition explores a century of design and innovation that followed, showcasing the diversity and quality of products made in stainless steel in Sheffield and beyond. As part of the centenary celebration, between 9 July and 26 August we will be screening a number of stainless steel related films in the Stainless Steel Cinema.

Exhibition sponsored by the Freshgate Trust Foundation and The 100 Club

T: 0114 278 2600
E: info@museums-sheffield.org.uk
W: www.museums-sheffield.org.uk

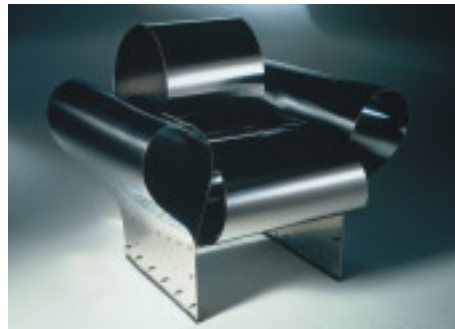
Address: Arundel Gate, Sheffield, S1 2PP

Images:

Teaset, c1960, designed by Eric Clements and made by Bramah Ltd, Sheffield

Well Tempered Chair, Ron Arad.
Manufactured by Vitra Editions

Photo: Copyright Ron Arad Associates



Rustless: The Harry Brearley Story

Kelham Island Museum

1 April - 17 November | Adults £5
Concessions £4 | Accompanied children FREE

Rustless: The Harry Brearley Story is a special exhibition at Kelham Island Museum to celebrate the stainless steel centenary. It showcases objects and documents from the Museum collections, explores the science, innovation and industry of stainless steel and explains how a Sheffield 'lad' changed the world.

See Page: 30 The museum invites you to bring along your unwanted stainless steel cutlery which will be collated and made into a piece of artwork sculpture by local artist Jason Heppenstall.

T: 0114 272 2106
E: ask@simt.co.uk
W: www.simt.co.uk /
www.hawleytoolcollection.com

Address: Alma Street, Sheffield. S3 8RY

Image: Product detail showing Rustless trademark



Stay Bright - Keep Bright: The impact of stainless steel on everyday life

The Hawley Gallery, Kelham Island Museum

1 April - 31 December | Adults £5
Concessions £4 | Accompanied children FREE

This exhibition highlights the impact of Harry Brearley's ground breaking discovery on everyday life. From the humble table knife to cutting edge surgical instruments, see 'before' and 'after' stainless products, alongside unique stainless pieces from the Hawley Collection.

Learn about the production of the first stainless table knives by R. F. Mosley & Co. Ltd. and discover the differences in the kitchen which mirrored the changing role of women in post-WWI Britain.

T: 0114 272 2106
E: ask@simt.co.uk
W: www.simt.co.uk /
www.hawleytoolcollection.com

Address: Alma Street, Sheffield. S3 8RY

Image: Batt Table Cutlery advertisement



Kinetic Water Sculpture

Winter Garden

From 10 May | Free

Visitors to the Winter Garden have long enjoyed kinetic water sculptures by Pete Rogers and this year Pete will install a brand new piece for the Festival. His work aims to both intrigue and amuse so drop by and see the sculpture come to life in the pond.

W: www.xdes.co.uk

Address: The Winter Garden,
Surrey Street, S1 2LH

Image: This way That way, Pete Rogers



The Collaborative Silver Charm Bracelet 2013

The Atrium, Cantor Building,
Sheffield Hallam University

3-27 May | Free

As a dynamic way to raise funds for their degree show, final year Metalwork and Jewellery students are raffling **The Collaborative Silver Charm Bracelet**. Comprised of fifteen beautifully handcrafted silver charms revealing the current work of each student, this is a truly unique item. Tickets will be available to purchase at £5 each. The winning ticket will be drawn: 5pm, 27th May, The Cantor building.

T: 0114 225 6965 (Gallery)
0781 615 1114 (tickets)
E: t.machin@shu.ac.uk
fenella_watson@hotmail.com (tickets)
W: www.shu.ac.uk/siagallery

Address: Cantor Building, Sheffield Hallam University, 153 Arundel Street, S1 2NU

Image: Charm Bracelet,
SHU Metalwork and Jewellery students

“In cutlers iron work we have in Sheffield the best of its kind done by English hands unsurpassable, when the workman chooses to do all he knows, by that of any living nation”
John Ruskin (1819 – 1900)

As written on the ceiling of the Banqueting Hall at the Cutlers' Hall, Sheffield



The Stain

Fusion Café, Butcher Works

9 - 31 May | Free

‘If you are irritated by every rub....how will you be polished?’

In recognition of the 100 Years of Stainless Steel, the 2nd year Jewellery & Metalwork students from Sheffield Hallam University have created a variety of innovative work to celebrate ‘The Stain’.

T: 0114 252 5972
E: gallery@fmc.rmt.org
W: www.academyofmakers.co.uk

Address: 72 Arundel Street, Sheffield, S1 2NS

Image: ‘Disgust’ cast bronze rings, Annabel Groves-Taylor



Pewter Showcase at the Scissor Factory

Sheffield Makers Emporium, Ernest Wright & Son Limited

15 - 25 May | Free

Camberwell College of Arts is one of the world’s foremost art and design institutions and we recently welcomed a group of undergraduate designers into Sheffield factories and galleries to seek inspiration from our metal trade heritage.

Ernest Wright and Son Limited is a family company hand-making the finest scissors and shears since 1902 using traditional skills passed down from generation to generation. Visit the new Sheffield Makers Emporium on site.

T: 0114 273 9977
E: enquiries@ernestwright.co.uk
W: www.ernestwright.co.uk

Address: Ernest Wright and Son Ltd, Endeavour Works, 58 Broad Lane, Sheffield, S1 4BT

Image: Pewter & Ceramic Vessels, Grace McCarthy



May Make a Folder

13

The Famous Sheffield Shop

27 May - 3 June | Free

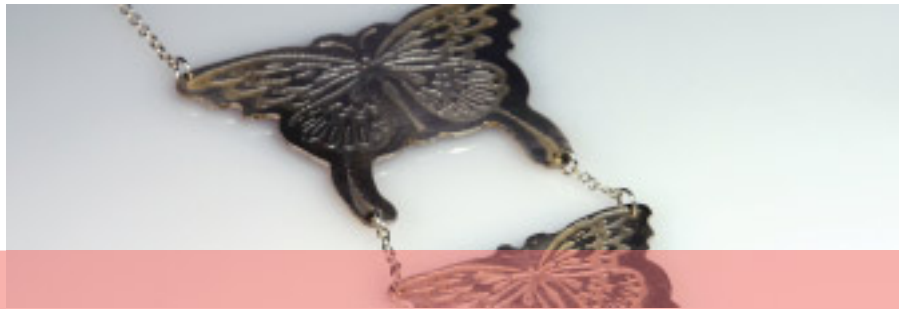
Sheffield is a city rich in highly skilled knife-makers. Their skills and products have inspired makers new to knifemaking to come together throughout May and make stainless steel folding knives based on a traditional pattern. These will be shown in a selling exhibition at the Famous Sheffield Shop at the end of the Festival.

Sponsored by KMA (British knifemakers Association) & Taylors Eye Witness

T: 0114 268 5701
E: sales@sheffield-made.com
W: www.sheffield-made.com

Address: 475 Ecclesall Rd, Sheffield, S11 8PP

Image: Folding Pocket Knife, Grace Horne



14 Freeman College Student Work on Show

Central Library, 1st Floor Case

3 - 31 May | Free

Part of Ruskin Mill Trust, Freeman College students display fine examples of hand-crafted metal work produced in the College's workshops. Freeman College promotes Sheffield's industrial heritage through craftsmanship in traditional and contemporary crafts.

Ruskin Mill Trust is a national charity improving the lifelong opportunities for young people, providing experiential education and training for young people marginalized by disadvantage, exclusion or special learning needs including ASD, Asperger's Syndrome, learning difficulties, mental health issues and challenging behaviour.

T: 0114 252 5972
E: gallery@fmc.rmt.org.uk
W: www.rmet.org.uk

Address: Central Library,
Surrey St, Sheffield, S1 1XZ

Images: Silver Necklace, Saskia Khan

Pewter Goblet, Freeman College Student Line



Piece by Piece - Step by Step

Kelham Island Museum

**3 - 31 May | Adults £5 | Concessions £4
Accompanied children FREE**

Instigated by Juliana Haynes, a recovering cancer patient, her fellow silversmithing students at Hillsborough College were asked to support Western Park Hospital Charity to raise vital funds. Everyone involved donated a 1inch square of sterling silver sheet which they individually designed by rolling, punching, reticulating and piercing. The result is a unique and beautiful object which will now be raffled. All proceeds will go to WPH charity. A chance to own a truly individual piece of art.

Tickets: £5 | Draw Date: 31 May

T: 0114 272 2106
E: ask@simt.co.uk
W: www.simt.co.uk

Address: Alma Street, Sheffield. S3 8RY

Image: Piece by Piece, Hillsborough College
Jewellery-Making students



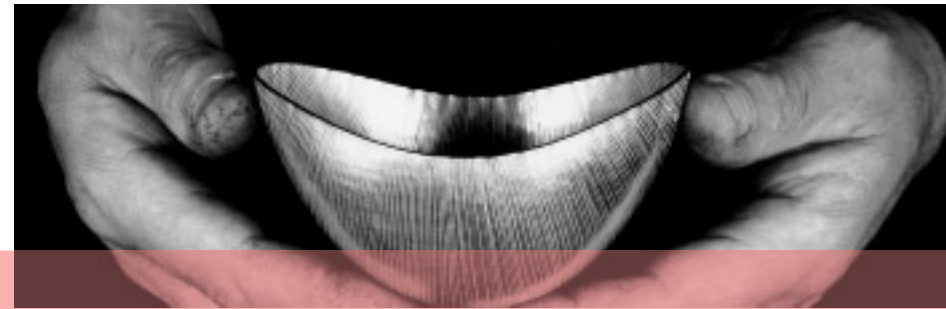
Commissions in the Making

Here at Galvanize we are always looking for new opportunities for Sheffield metalworkers to find new partners and create new work. As the year progresses, look out for new Galvanize commissions:

Metalworker **Deb Smith** will be making stainless steel accessories for our favourite singer songwriter, Richard Hawley.

Two new announcements will be made for commissions for **Outokumpu Stainless Ltd** and for the **Civic Collection** housed at Sheffield Town Hall (funded by the **J G Graves Trust Foundation**).

Image: Streets in the Sky Brooch,
Deb Smith and Richard Priestley



The Mighty Metalsmith: Decorative and Domestic Metal and Silverware

15

Kath Libbert

Jewellery Gallery

23 May - 7 July 2013

"Have nothing in your house that you do not know to be useful, or believe to be beautiful".
William Morris

We are delighted to tell you about this exhibition in Saltaire:

The Mighty Metalsmith presents thirteen of the finest UK based metal and silversmiths in a selling exhibition which will champion both the domestic and decorative aspects of their craft. A special event on 9th June with speakers: silversmith Rauni Higson and collector Jacqueline Gestetner is free but booking essential.

T: 01274 599790
E: info@kathlibbertjewellery.co.uk
W: www.kathlibbertjewellery.co.uk

Address: 2nd Floor, Salts Mill, Saltaire, BD18 3LA

Images: Silver Bowl, Adrian Hope
and Silver Oil and Vinegar vessels





16

Events



Bare Project presents: Stainless - Galvanize Metal Party

Bank Street Arts

Saturday 4 May, 19.00 - 23.00
In advance (advisable): £7.50 Full, £5.50 concessions (BSA Members, students)

On the door: £12/£10 - Licenced event

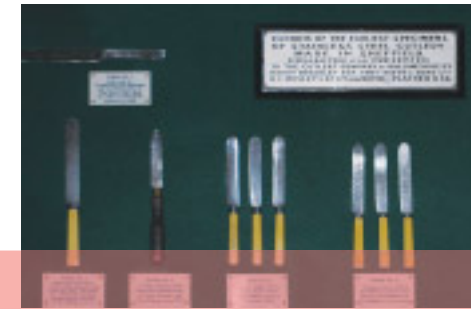
Stainless is a Bauhaus inspired night of festivities celebrating metal works in Sheffield. Bare Project combines performance art, live music, dance and installation on a metal theme.

Party on down to bells and brass bands, struggle through metal chutes, and maybe even stumble across the Tin Man rusted to a spot. Bookings: www.eventbrite.co.uk/event/5671644040

T: 0114 346 3034
E: info@bankstreetarts.com
W: www.bankstreetarts.com

Address: 32-40 Bank Street, Sheffield, S1 2DS

Image: Bauhaus Metal Party, from the 'Art as Life' exhibition at the Barbican



Tour of the Cutlers' Hall

Tuesday 7 May, 14.30 & Tuesday 21 May, 10.00 | £3.50

The Cutlers' Hall is a Grade II building in the centre of Sheffield - the symbol of the Cutlers' Company, which has protected and promoted Sheffield metal industries for the last 400 years. This magnificent third Hall was built in 1832 and houses collections of Sheffield silver and paintings.

The tour lasts about 75 minutes with access to the public and private rooms, and a chance to see Harry Brearley's display of his earliest knife blades.

Bookings: saraunwin@yahoo.co.uk

T: 0114 272 8456
E: admin@cutlers-hallamshire.org.uk
W: www.cutlers-hallamshire.org.uk

Address: The Cutlers' Hall, Church Street, Sheffield, S1 1HG

Image: Harry Brearley's first Stainless steel knives



Wentworth Pewter Factory Tour

Wednesday 8 May, 11.00 & 14.00 | Free

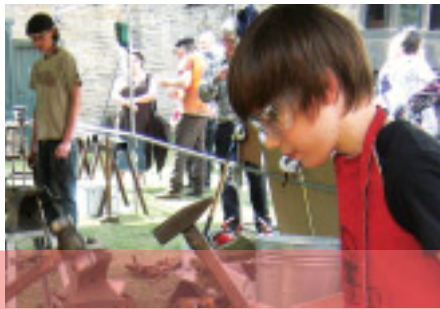
Founded in 1949, our partners at Wentworth Pewter are proud to open their factory to visitors. There will be a chance to see how the products are hand made using traditional methods. Space is limited and booking advised as we know this is a popular event.

T: 0114 2447693
E: sales@wentworth-pewter.com
W: www.wentworth-pewter.com

Address: Monarch Works, Catley Road, Darnall, Sheffield S9 5JF

Image: Gleam Carafe and Tumbler Set, Miranda Watkins design for Wentworth Pewter

17



18 European Pewter Union Conference

Pewter Factories, Kelham Island Museum and Mercure St Pauls Hotel

Friday 10 – Saturday 11 May

The annual European Pewter Union Conference is being held in Sheffield, the home to much of the UK Pewter trade. The event will involve factory visits, a celebration dinner and the conference meeting itself. Delegates are expected from throughout Europe and anyone with an interest in Pewter is able to attend. A fee is applicable depending on how much of the event you wish to attend. For details contact Cathy Steele at cathy.steele@btconnect.com

E: cathy.steele@btconnect.com
W: www.britishpewter.com

Image: Gleam, Miranda Watkins design for Wentworth Pewter

Transformations

The Showroom Cinema

**Saturday 11 May, 20.30 | £10 / £7 concessions
£5 Under 18s & Students**

The centenaries of Benjamin Britten's birth and the discovery of stainless steel in Sheffield will be marked in this live chamber music and film event. Britten's *Six Metamorphoses after Ovid* will be performed by oboist Adrian Wilson alongside a specially commissioned film and there will be a premiere of a new piece of music by Music in the Round's Associate Composer Charlie Piper set to BFI archive footage of steel production.

T: 0114 275 7727
E: info@musicintheround.co.uk
W: www.musicintheround.co.uk

Address: The Showroom, Paternoster Row, Sheffield S1 2BX

Image: Courtesy of www.britten100.org

Festival Forge In

Abbeyle Industrial Hamlet

Saturday 11 & Sunday 12 May, 10.00 - 16.00

Adults £3 | Accompanied Children FREE

Join our guests the British Artist Blacksmiths Association, some of the most skilled blacksmiths in the country, at their forges for a 'stainless' twist on forging hot metal at this 18th century scythe and steelworks.

Enjoy a showcase of traditional crafts and skills, try your hand at woodturning or lacemaking or join Mr Tyzack for a tour of the Hamlet. Find out about the exciting new restoration project launching Spring 2013.

T: 0114 272 2106
E: ask@simt.co.uk
W: www.simt.co.uk

Address: Abbeyle Road South, Sheffield S2 7QW

Image: Blacksmithing at Abbeyle Industrial Hamlet

Tao Jewelry by Dorry Hsu, STAIN-LESS

Stainless Steel: a versatile material that touches every aspect of our lives; and it's 100% recyclable.



20

The History and work of the Sheffield Assay Office

The Famous Sheffield Shop

Wednesday 15 May, 18.30 | Free

Emma Paragreen, Librarian and Curator at the Sheffield Assay Office, is our guest speaker this year. Following her talk there will be plenty of time for a question and answer session in the informal atmosphere of The Famous Sheffield Shop. Emma has a wealth of knowledge to share about the fascinating and eventful history of our Assay office. She will also conduct a quiz!

Booking essential via the shop

T: 0114 268 5701
E: sales@sheffield-made.com
W: www.sheffield-made.com

Address: 475 Ecclesall Rd, Sheffield, S11 8PP

Image: The Famous Sheffield Shop

18 May - Jewellery Day

Yorkshire Artspace, Persistence Works

Saturday 18 May, 11.00 - 17.00 | Free

18 May – Jewellery Day presents a variety of up and coming and well established contemporary jewellery designers who will display their stunning designs at this first ever selling event that takes place in the Atrium of the award winning Persistence Works Studios.

Designer-maker Drew Markou, a recent graduate who already attracts a lot of attention for his innovative jewellery designs, set a record by making 100 items of jewellery in just one day at the School of Jewellery in Birmingham. The jewellery will be on sale alongside the documentary of how he did it. All jewellery for sale.

T: 0114 213 0111
E: mir@artspace.org.uk
W: www.artspace.org.uk

Address: Entrance through MADE North Gallery, 21 Brown Street, Sheffield, S1 2BS

Images: Brooch 1, 2013, Drew Markou; Earth Diver, Grieg Alderman; Ring, Jennie Gill



Linda Brothwell at In the Triangle

Portland Works

Sunday 19 May, 11.00 - 15.00 | Free

Portland Works was the first place in the world where stainless steel was made into cutlery. Come to the open day, part of the In the Triangle event, and meet artist Linda Brothwell, recipient of Jerwood Makers open award 2013. Linda will be talking about her recent project at Portland Works using stainless steel which used file cutting chisels she made with the help of Andy Cole on site.

E: info@portlandworks.co.uk
W: www.portlandworks.co.uk

Address: Portland Works, Randall St, Sheffield S2 4SJ

Image: File Cutting Chisels, Linda Brothwell

Duncan Edwards - Sheffield Knifemaker

Shepherd Wheel - Free

Saturday 18 & Sunday 19 May, 10.00 - 16.00

Set in the picturesque valley of the Porter Brook, Shepherd Wheel is a unique working example of Sheffield's knife grinding industry. Sheffield Knifemaker, Duncan Edwards displays his folding pocket knives made using hand forged Sheffield Steel and decorated using traditional Sheffield techniques.

See the restored waterwheel and machinery and hear stories about the grinders who worked here over the centuries.

Shepherd Wheel is open every weekend and Bank Holiday Monday.

T: 0114 272 2106
E: ask@simt.co.uk
W: www.simt.co.uk

Address: Shepherd Wheel, Bingham Park, Off Hangingwater Road, Sheffield S11 2YE

Image: Shepherd Wheel grinding workshop

Little Mesters at Work

Kelham Island Museum

**Sunday 19 May, 11.00 - 16.45
| Adults £5 | Concessions £4
Accompanied children FREE**

Little Mesters, independent Sheffield craftsmen responsible for the city's legendary reputation in cutlery, continue their skilled tradition at Kelham Island Museum.

Visit the reconstructed Victorian 'Little Mesters' Street workshops where Stan Shaw and Pete Goss, two of the few remaining modern day Little Mesters, produce a variety of products including penknives and surgical instruments sold all over the world.

T: 0114 272 2106
E: ask@simt.co.uk
W: www.simt.co.uk

Address: Alma Street, Sheffield, S3 8RY

Image: Stan Shaw, Little Mester

21



'Nurture' Basket. Silver and Stainless Steel by Chris Knight
Photo by Adrian Sassoan. Aesthetics of Manufacture



One Maker's Making

Sheffield Institute for Art Gallery

Friday 24 May 12.30 - 13.30 | Free

Jessica Briggs is a designer/maker of contemporary jewellery, working predominantly, but not exclusively, in silver with gold. Originally a textile designer, her distinctive, desirable work is widely exhibited throughout the UK.

Based in Sheffield and with work in ACJ's STAIN-LESS Exhibition (see page 5), Jessica will share images and insights into her experience, inspiration, creativity, business and the methodologies involved in her making.

T: 0114 225 6956
E: t.machin@shu.ac.uk
W: www.shu.ac.uk/sia/gallery
www.lovedazzle.com

Address: Cantor Building,
Sheffield Hallam University,
153 Arundel Street, Sheffield S1 2NU

Image: Jessica Briggs Jewellery



The History and work of the Sheffield Assay Office

Sheffield Assay Office

Thursday 30 May, 10.00 - 12.30 | £10.00 including tea, coffee, biscuits on arrival

Join us at the Sheffield Assay Office for an interesting talk on the history and work of Sheffield Assay Office as it celebrates its 240th Anniversary.

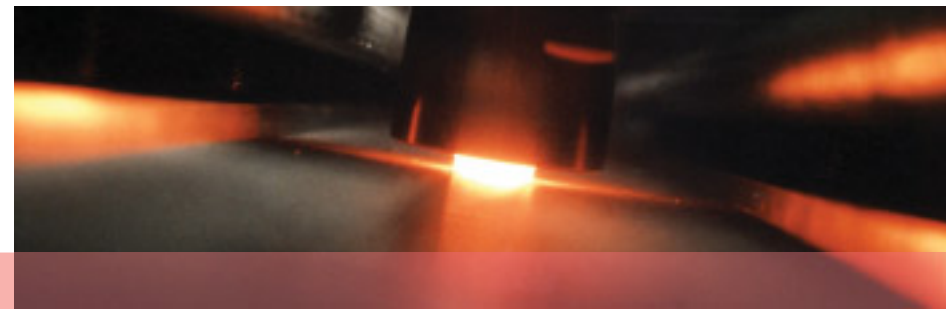
The visit also gives you the opportunity to tour the marking hall and view articles from the library and silver collection.

Booking essential as places are limited please contact via telephone or email.

T: 0114 231 2121
E: hospitality@assayoffice.co.uk
W: www.assayoffice.co.uk

Address: Guardians' Hall, Beulah Road,
Hillsborough, Sheffield, S6 2AN

Image: Hallmarking at Sheffield Assay Office



Stiring in the Steel - Pie & Pea Night

Fusion Café

Wednesday 22 May, 19.00 | £20.00 Bring your own wine

Enjoy a fabulous Pea & Pie Supper at Fusion Café and join folding knife-maker Grace Horne and Steve Cater from The Welding Institute to find out more about the fascinating research being carried out with Sheffield Hallam University around Friction Stir Welding.

The Knife Makers will explain a welding technique that is fast becoming the process of choice for manufacturing structures such as boats, trains and planes. Grace and Steve will demonstrate how the technique can be applied in small scale, craft processes exhibited in adjoining Butcher Works Gallery.

Don't miss this chance to enjoy organic food and meet people at the heart of craft innovation!
Booking via the Ruskin Arts & Crafts shop.

T: 0114 252 5985
E: ruskinartsandcrafts@gmail.com

Address: Butcher Works,
72 Arundel Street, Sheffield, S1 2NS

Images: Friction stir welding in action at TWI

Tom Wylie, Centenary Cleaver, 2013
Stainless Steel (420) manufactured
by TATA in Sheffield. Part of Aesthetics
of Manufacture, Butcher Works Gallery





24 AESSEAL Factory Tour

Tuesday 21 May , 11.00 - 12.00 | Free

AESSEAL are one of the major specialists in the design and manufacture of mechanical seals and support systems. Mechanical seals are used in pumps and rotating equipment to prevent liquids and gases from escaping into the environment. This is a fascinating insight into the use of Stainless steel manufacture in Sheffield and a rare opportunity to see behind the doors of this global manufacturer.

AESSEAL products are part of Aesthetics of Manufacture at Butcher Works Gallery.

Booking via saraunwin@yahoo.co.uk

W: www.aesseal.co.uk

Address: Mill Close,
Bradmarsh Business Park,
Rotherham S60 1BZ

Image: Gas compressor seal, AESSEAL

MI:21 World Metal Index

Central Library

Friday 31 May, 13.00 - 17.00 | Free

This fascinating service based here in Sheffield is a powerful resource for information on metallic materials used in the manufacturing industry. Come and find out about this world-leading resource at this drop in session. Study trade catalogues and try out the MI:21 metals database in the company of the people who know.

E: Hazel.Manuras@sheffield.gov.uk
W: www.sheffield.gov.uk/libraries

Address: Central Library,
Surrey Street, Sheffield S1 1XZ

Image: From the World Metal Index

Sheffield Made Metal Market at Down by the Riverside

Kelham Island Museum

Saturday 21 - Sunday 22 September | Free

A sneak preview of an event we think you will like later in the year! Kelham Island Museum reveals Sheffield's industrial story, where Made in Sheffield remains a mark of craftsmanship known worldwide.

The first Sheffield Made Metal Market showcases the work of Sheffield artisans with metalworkers, jewellers and artists displaying work for sale. The Down by the Riverside Festival celebrates the alliance of people, waterpower and steelmaking to form Kelham Island with walks and talks, kayaking, live music stage, mini beer festival and BBQ.

T: 0114 272 2106
E: ask@simt.co.uk
W: www.simt.co.uk

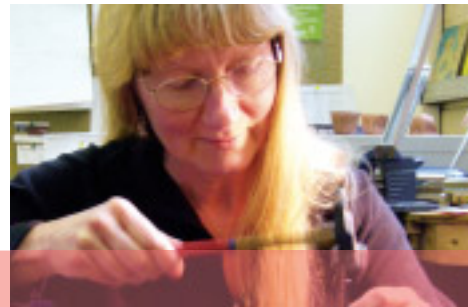
Address: Alma Street, Sheffield, S3 8RY

Image: Pewter Tankards at Kelham Island Metal Market

Galvanize Working Metal Workshops

25

Jennie Gill. Photo by Jack Earnes



26

2 Day Copper Raising Masterclass with Charlotte Tollyfield

Persistence Works Studios

**Saturday 4 & Sunday 5 May, 10.00 - 16.00
£150.00 including materials**

A special weekend masterclass for adults in the specialist silversmithing technique of hand raising. Participants will create their own copper bowl using traditional hammer techniques and have the opportunity to get it professionally polished and silver plated, ready to take home and cherish.

Book in advance by contacting Charlotte.

T: 07910 344 332
E: info@charlottetollyfield.co.uk
W: www.charlottetollyfield.co.uk

Address: Persistence Works,
21 Brown Street, Sheffield S1 2BS

Image: Raised Bowl, Charlotte Tollyfield

Forge your own Rustic Stainless Steel Cutlery

Ridgeway Forge

**Saturday 4 & Saturday 11 May | From 09.00
£50.00 including materials & meal**

Join Andrew and the team to forge your own rustic knife and fork from cutlery grade stainless steel. You will learn how to grind the blade and cutting edge and polish the handles. Not only do you get to take the cutlery home, but you will eat with it first at a convivial Pie & Pea lunch!

Be your own Little Mester and celebrate Sheffield's tradition of manufacturing cutlery and flatware. Safety wear supplied; wear stout boots and suitable (non precious) clothing.

Age restriction: 18+ only. Booking essential.

E: saraunwin@yahoo.co.uk

Address: Sloade Lane, Ridgeway,
Sheffield, S12 3YA

Image: Ridgeway Forge Anvil

Stone Setting with Chris Boland

Porter Brook Studios

**Saturday 11 May 13.00 - 16.00
and Thursday 16 May 18.00 - 21.00 |
£30.00 including materials**

Come and enjoy a few creative hours making wonderful jewellery with Chris Boland. You don't need any experience and you'll leave with either your very own, stone set earrings or pendant.

T: 0782 863 0561
E: chris-boland@hotmail.co.uk
W: www.chris-boland.co.uk

Address: Avec Building,
3-7 Sidney Street, Sheffield, S1 4RG

Image: 18ct Gold Ring set with Emerald,
Chris Boland

27

Argentium Silver Workshop with Annette Petch

Manor Oaks Studios

**Saturday 18 May, 10.00 - 16.00 |
£90.00 + materials**

Come and spend a day creating a beautiful unique piece of jewellery in Argentium silver, with Annette Petch in her studio. Argentium silver is more malleable and ductile than sterling silver, making it a joy to work with. Some experience of metalworking would be useful, email Annette for more information. Booking essential. Cost includes a small amount of Argentium for experimentation.

T: 07952 235 985
E: annette@annettepetchjewellery.co.uk
W: www.annettepetchjewellery.co.uk

Address: Studio 1, Manor Oaks Studios,
389 Manor Lane, Sheffield, S2 1UL

Image: Annette Chasing

2 Day Silver Spoon Making Masterclass with Charlotte Tollyfield

Persistence Works Studios

**Saturday 18 & Sunday 19 May 2013,
10.00 - 16.00 | £150.00 including materials**

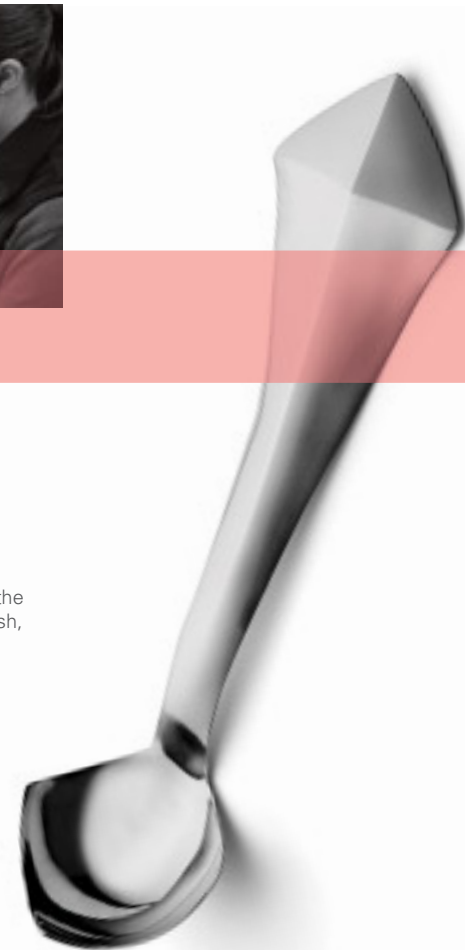
A special weekend masterclass for adults in the art of making a silver spoon to love and cherish, using traditional silversmithing techniques. Participants will design and create their own sterling silver spoon, that will be hallmarked at The Sheffield Assay Office.

Book in advance by contacting Charlotte.

T: 07910 344 332
E: info@charlottetollyfield.co.uk
W: www.charlottetollyfield.co.uk

Address: Persistence Works,
21 Brown Street, Sheffield S1 2BS

Image: Spoon, Charlotte Tollyfield



Jewellery Starter Workshops at the Starter Studio

Persistence Works Studios

**Sunday 19, Saturday 25 & Sunday 26 May,
10.00 - 15.00 | £95.00 including materials**

Join the Yorkshire Artspace Starter Studio team to explore your creative side and produce either a pendant, ring, earrings or cufflinks. You will learn basic silver jewellery making skills, like texturing the surface of silver using a rolling mill, hand piercing, hammering and soldering and take home a unique piece of jewellery for yourself or to give to that someone special in your life.

Book in advance by contacting Sarah Pasley.

T: 07810 385245
E: sarah@spasley.com
W: www.artspace.org.uk

Address: Persistence Works,
21 Brown Street, Sheffield S1 2BS

Image: Jewellery, Sarah Pasley



Silver Jewellery in a Day workshop

Butcher Works

**Saturday 1 June, 10.00 - 16.00
£75.00 + materials**

Join Victoria Kershaw from the Academy of Makers in her Butcher Works studio for a day of jewellery making. Learn basic techniques such as texturing and forming to help design your own piece of silver jewellery. No experience necessary.

Victoria runs on going workshops,
please contact her directly for more dates.

T: 07973 679 062
E: info@victoriakershaw.com
W: www.victoriakershaw.com

Address: Butcher Works, 68 Arundel Street,
Unit 4, Sheffield, S1 2NS

Image: Chip Forks, Victoria Kershaw



Galvanize Out & About





100 Years of Stainless Steel

2013 marks 100 years since Stainless Steel was discovered by Harry Brearley, a breakthrough which would revolutionize the modern world and put Sheffield on the global map. Our friends at the Stainless Steel Group, led by the Master Cutler, are hosting a year long celebratory events programme to ensure that this historic landmark is commemorated in style and reaffirm the legacy of innovation which still exists in the city today.

Look out especially for the centenary book out in time for Galvanize and available at some events and venues. It's a fantastic read and looks at the history of stainless steel, its applications but importantly, at how stainless steel still shapes the world.

www.welcometosheffield.co.uk/visit/stainless

Image: The Cutting Edge, Sheaf Square, Sheffield



Stainless Steel Jewels

Your Place!

During May | Free

To celebrate 100 Years of Stainless Steel we have been gifted 100 components and we are looking for 100 eager jewellers – amateur and professional, young and old – to come and collect one component each and then make a piece of jewellery or an accessory by adding to it creatively. Each piece needs to be returned to us by 30 JUNE and we will create an online gallery of the pieces before returning your work. Special prizes!

Collect your component and the full brief from Ruskin Arts & Crafts from 10 May.

T: 0114 252 5985
E: ruskinartsandcrafts@gmail.com

Address: Ruskin Arts & Crafts, Butcher Works, 72 Arundel Street, Sheffield, S1 2NS

Image: Jewellery bench at Bank Street Arts



Cutlery Redux - Cutlery Collection for Jason Heppenstall commission

Kelham Island Museum

3 - 31 May

As part of the exhibition, Rustless: The Harry Brearley Story at Kelham Island Museum (see page 10), you are invited to bring along your unwanted stainless steel cutlery which will be collated and made into a sculpture by local artist Jason Heppenstall to celebrate the 100 Years of Stainless Steel centenary. Meet Jason at the Sheffield Made Metal Market at Down by the Riverside this September.

T: 0114 272 2106
E: ask@simt.co.uk
W: www.simt.co.uk

Address: Alma Street, Sheffield S3 8RY

Image: Humming Bird, Jason Heppenstall

100 Words for 100 Years



**YEARS OF
STAINLESS STEEL**
Sheffield

To celebrate 100 years of Stainless Steel, we are collaborating with Off the Shelf Festival of Words in a competition where we invite you to show us your writing mettle.

Using exactly 100 words, (not including the title of your piece) you are invited to create an original piece of micro fiction which must include the word 'stainless' or 'steel'.

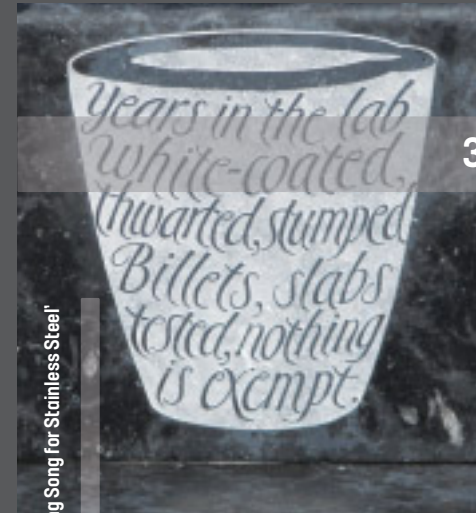
The winning entry will receive a Sheffield made stainless steel gift plus a selection of signed books. The winning entry will also be featured on Off the Shelf's website from September. **Closing date Friday 28 June 2013.**

Entries limited to one per person. Please send to:
**Off the Shelf Festival of Words, Sheffield City Council,
Room 311, Town Hall, Pinstone Street, Sheffield, S1 2HH.**

Please include your contact details including a telephone number with your entry.

For further details contact Off the Shelf on 0114 273 4716

The competition will be judged by writer and singer Ray Hearne. Ray has also created a wonderful new poem 'Sing Song for Stainless Steel', the words of which have been carved onto benches along the Moor by letter carver Pip Hall. This commission is part of Off the Shelf Festival of Words 'Text and the City' project.



Text detail from 'Sing Song for Stainless Steel'

31





32 Ruskin Arts & Crafts Shop

Welcome to the re-launch of the Ruskin Arts & Crafts shop, now collectively run by members of the Academy of Makers at Butcher Works. We are still selling the beautiful work produced by Freeman College students and now have a wider selection of original hand-made crafts by national and local Makers; delightful gifts for any occasion.

Please join us for drinks at 18.00 - 20.00 on Thursday 9th May 2013 and take a look at our special edition 100 Years of Stainless Steel line.

T: 0114 252 5985

Address: 72, Arundel Street, Sheffield S1 2NS

Image: Brain Coral Cup, Ryan McClean

Andrew Vickers - The Hedge

The Wood Shed - Storrs Wood

4, 5, 6, 11 & 12 May, 10.00 - 16.00 | Free

'The Hedge' is a stainless steel and stone sculpture uniting man-made and natural materials through the use of traditional woodland skills.

See sculptor Andrew Vickers work to complete 'The Hedge' in his Storrs Wood studio and see life from his side of the wall, where sculptures line the bank of Storrs Brook such as 'Nose to the Grindstone' carved into a 3ft reclaimed grindstone and mounted onto oak. Storrs Wood is a private workspace and open to the public on stated dates for the Festival.

T: 0778 757 3344

E: stonefacevickers@gmail.com

W: www.stonefacesculpture.com

Address: The Wood Shed, Storrs Wood, Stanington, Sheffield S6 6GY

Image: The Hedge, Andrew Vickers

Craft Finder

Looking for contemporary craft? With Craft Finder you can find places where you can see and buy contemporary craft in all parts of the UK and online. They have over 600 galleries, exhibitions and studios listed, and you can discover over 200 of the best designer-makers and explore and share their work.

W: www.craftfinder.org.uk

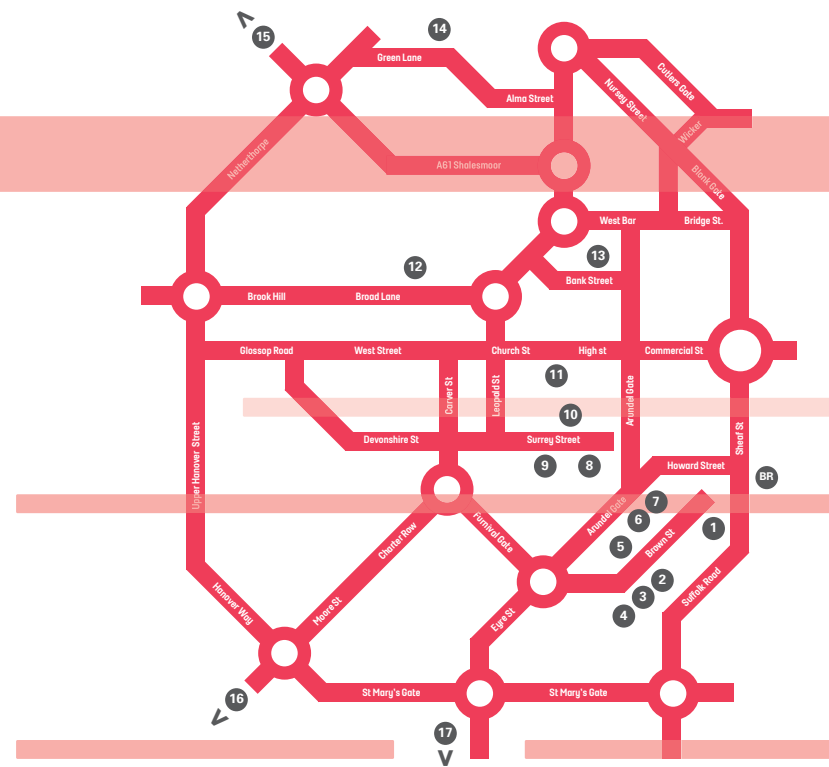
facebook: www.facebook.com/craftfinder

twitter: @craftfinder

Image: Vessel, Zoe Watts



City centre location guide



You will find specific address details for each site within this brochure.

1. Showroom Cinema
2. Persistence Works
3. Made North Gallery
4. Porter Brook Studios
5. Sheffield Institute of Arts and Cantor Building
6. Butcher Works Gallery & Fusion Cafe
7. Ruskin Arts & Crafts Shop
8. Museums Sheffield: Millennium Gallery
9. Winter Garden
10. Central Library
11. Cutlers' Hall
12. Ernest Wright & Sons Ltd
13. Bank Street Arts
14. Kelham Island Museum
15. Sheffield Assay Office
16. The Famous Sheffield Shop
17. Portland Works



Galvanize Sheffield is a partnership between:

Wentworth Pewter Ltd, Sheffield Assay Office, Sheffield Cathedral, Yorkshire Artspace, Museums Sheffield, Sheffield Hallam University, Ruskin Mill Education Trust/Freeman College, The Academy of Makers and Sheffield Industrial Museums Trust.

Funding partners:

We would like to thank our funding partners for their invaluable support for the Festival: The 100 Club, Arts Council England, The J G Graves Trust, Ruskin Mill/Freeman College, Sheffield City Council. With special thanks to Outokumpu Stainless Ltd, AESSEAL plc and Ancon Building Products for advice, support and materials.

With thanks to:

The members of the Galvanize Steering Group; all the designers and makers who have contributed so richly to the programme; the businesses who have opened their doors for tours; the venues who have programmed activity; all the festival partners who have contributed and supported the festival; Tony Roberts at ISIM Consultancy and Owen Waterhouse for website support and to modern creatives (www.moderncreatives.com) for all Festival design.

With thanks to



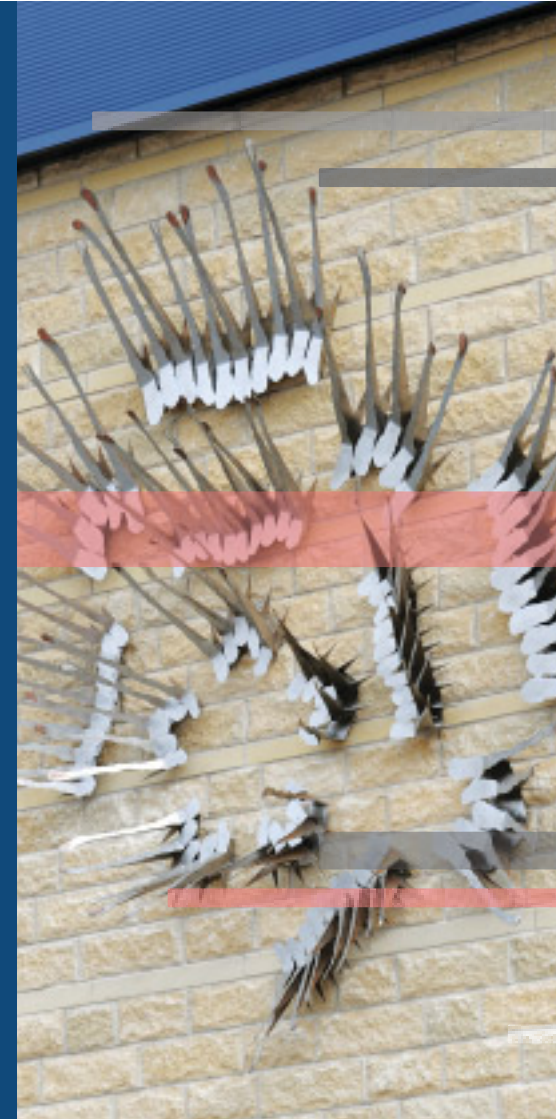
Galvanize Metal Walk

www.galvanizefestival.com

37

Take yourself off on a walk around some fabulous metal landmarks, street art and sculptures in the city centre with our self-led walking guide. This will be downloadable from the website from **Monday 20 May** and will include images and information as you go. Some out of town highlights will be included too!

White Rose by Junko Mori for the Sheffield Assay Office
Photo by Steve Ellis



**A wonderful opportunity to visit
100 artists in 55 different venues to
see what artists do, how and why.**

**Look out for brochures around the city
or see our website for details:**
www.openupsheffield.co.uk

Saturday 4th, Sunday 5th, Monday 6th and Saturday 11th, Sunday 12th May 11.00am - 5.00pm